



**VINCO**

HOLLOW CORE



**TILE CENTRE LTD.**



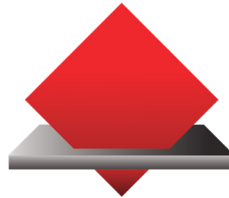
ADDRESS

91/93 Sixth street,  
Industrial Area  
Kampala,  
Uganda  
[www.tilecentre.co.ug](http://www.tilecentre.co.ug)  
[info@tilecentre.co.ug](mailto:info@tilecentre.co.ug)



**TILE CENTRE LTD.**

# INTRODUCTION



Tile Centre Limited was established in Uganda in 1990 and has expanded to become one of the largest and leading companies for building materials in Uganda. Its range of products includes tiles, glass blocks, sanitary ware, accessories and shower cubicles.

The company diversified its product base in 2007 into the fabrication and installation of high quality aluminium products. These include ACP cladding, curtain walling, structural glazing, aluminium doors and windows.

In 2017, through the brand name Vinco, the company ventured into the manufacturing

of pre-stressed hollow core concrete components. Vinco presents its range of hollow core products including: wall and floor panels, column bases and H- columns for boundary walls.

Manufactured using premium materials, and using world class machinery, our hollow core division aims to integrate modern, international building methods in Uganda's construction industry. Crafted by our team of professionals, and based on quality first, we offer a superior alternative to traditional building methods.



# HOLLOW CORE

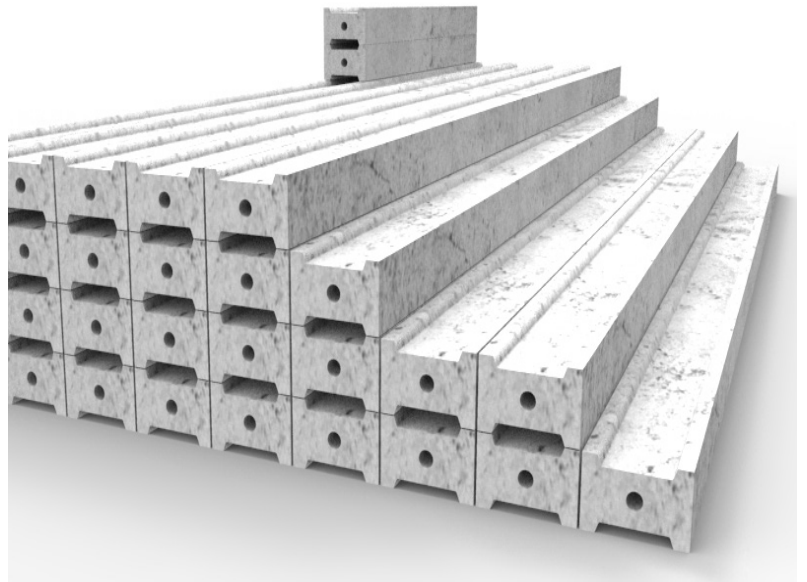
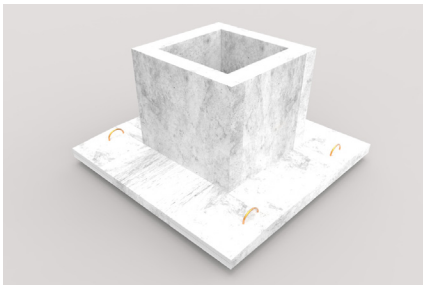
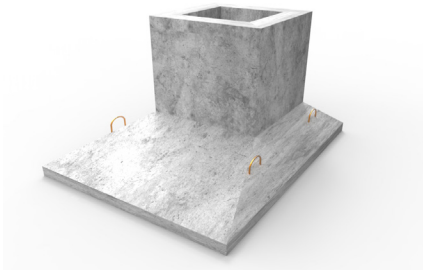
Hollow core wall and floor slabs are pre-cast, pre-stressed concrete panels designed to be used in a variety of building and civil structures.

The slabs are made using high-tensile steel bars which are stretched and tensioned. The tensioned steel reinforces the hollow core concrete slabs and improves their structural capacity.

The steel is tensioned on a casting bed, on top of which concrete is poured and moulded using high performing slip-form machines. The slabs formed have longitudinal voids that extend throughout, to make each slab lighter. Once the concrete has set and hardened, the slabs are cut according to each customer's requirements. The concrete batching plant meticulously mixes cement, stone and sand to create a premium mixture of C25 grade concrete.

Our superior machinery and internationally engineered casting beds ensure each slab has structural integrity and is geometrically well formed.

*What are Hollow-core slabs and how are they made?*



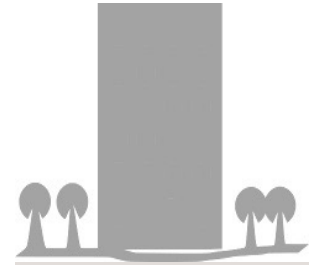
# ADVANTAGES



**Better quality control**



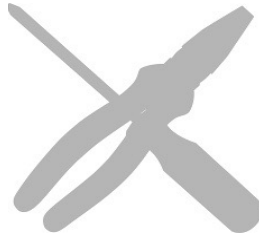
**Reduced on-site labour, Clean and safe site condition and Rapid construction**



**Green product, Less building material used and Can be used in seismic zones, Fire resistant**



**Design flexibility, Zero shuttering**



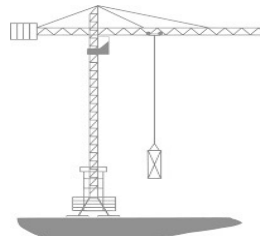
**Space saving, Increased Strength and Durability**



**Smoother surface finish**



**Factory casting.**



**Pre-stress better loading capacity, Extra Long span, up to 8m**



**Material uniformity throughout the structure, 30% Less weight per m<sup>2</sup>**





High rise structures



Stadiums



Industrial & Warehousing



Commercial



Offices



Educational & Religious Institutions



Townhouses & Housing



Boundary walls



Multi-storey car parks



Hotels



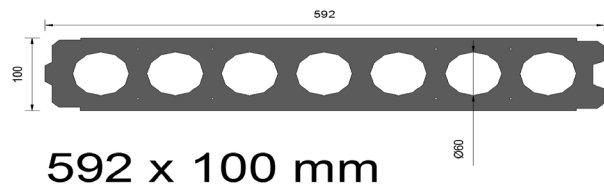
Hospitals



Tunnels & Bridges

# WALL SLABS

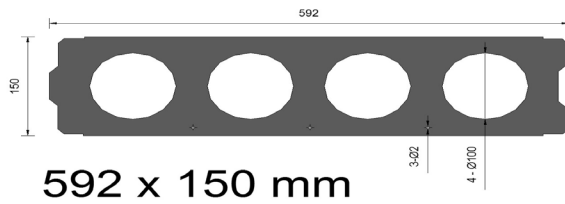
## 592MM X 100MM HOLLOW CORE WALL SLAB



- 592mm wide and 100mm thick Slab of hollow core
- Reinforced with steel
- 15MPa minimum concrete strength
- 1 hour fire rating



## 592MM X 150MM HOLLOW CORE WALL SLAB



- 592mm wide and 150mm thick Slab of hollow core
- Reinforced with steel
- 15MPa minimum concrete strength
- 1 hour fire rating.

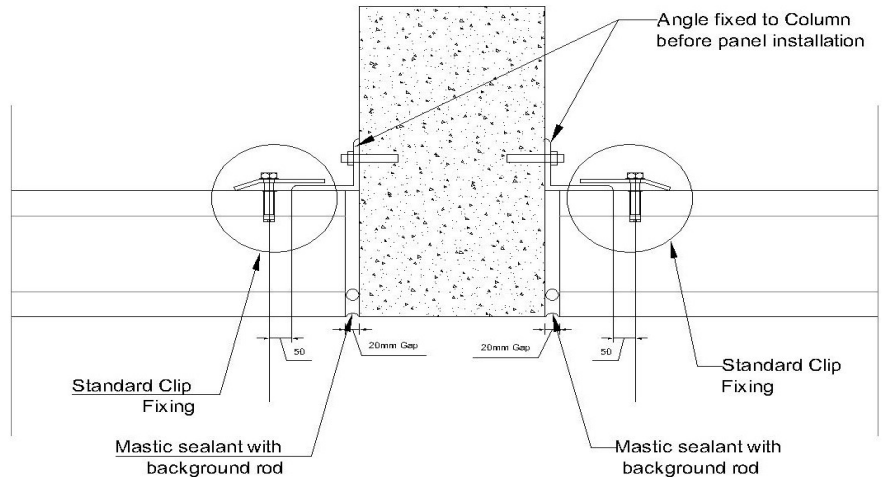
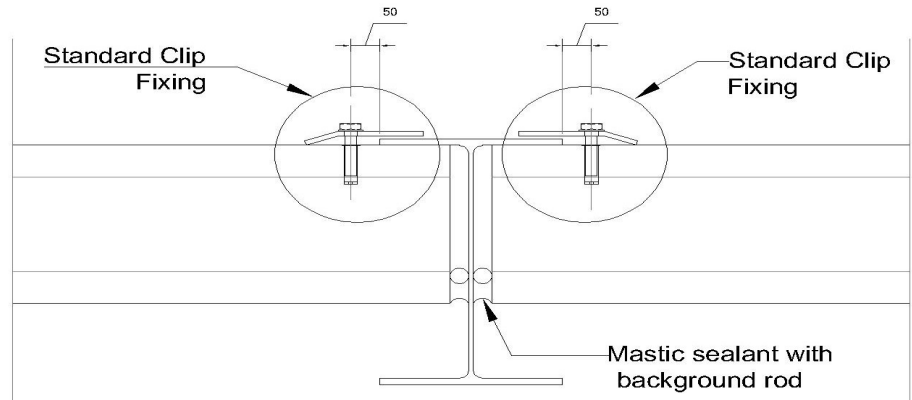


### Prestressed wall panels can be used as;

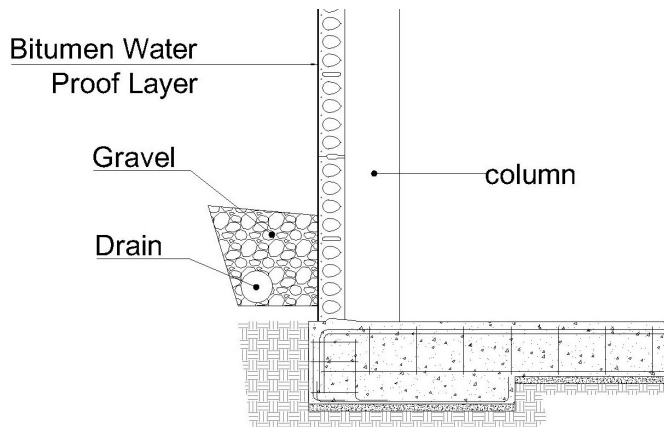
1. Wall in fills in buildings,
2. Boundary walls
3. Retaining walls.

# CONNECTION DETAILS

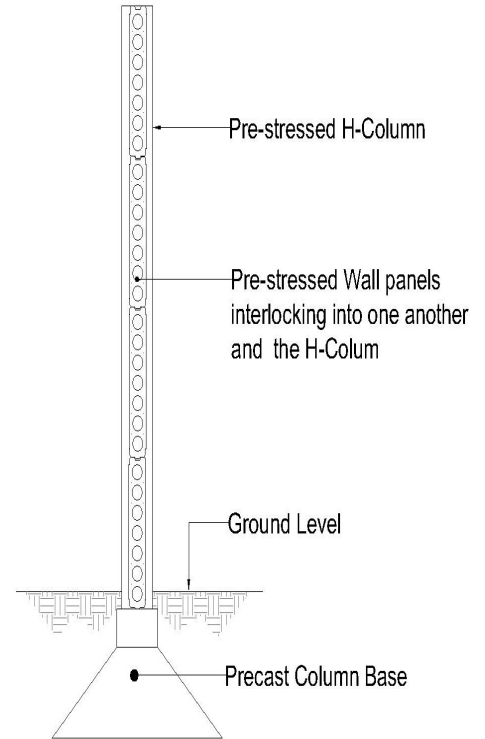
Wall Connection Details



## Retaining Wall Details

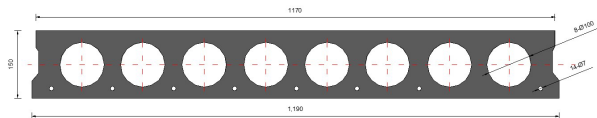


## Boundary Wall Details



# FLOOR SLABS

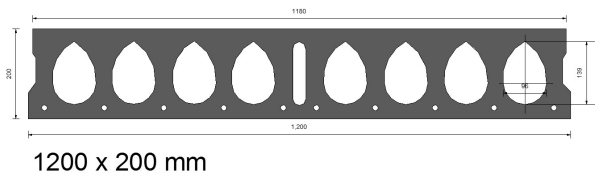
## 1190MM X 150MM HOLLOW CORE FLOOR SLAB



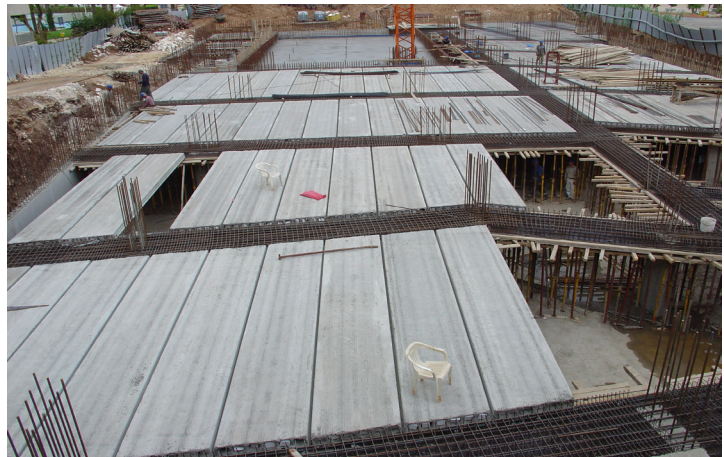
1190 x 150 mm

- 1190mm wide and 150mm thick Floor Slab of hollow core
- Reinforced with tensile steel cables
- 25MPa minimum concrete strength at de-tensioning
- Service load of 5.0 kN/sqm at a maximum span of 6m long
- Service load of 7.5 kN/sqm at a maximum span of 4.5m long
- One hour fire rating.

## 1200MM X 200MM HOLLOW CORE FLOOR SLAB.

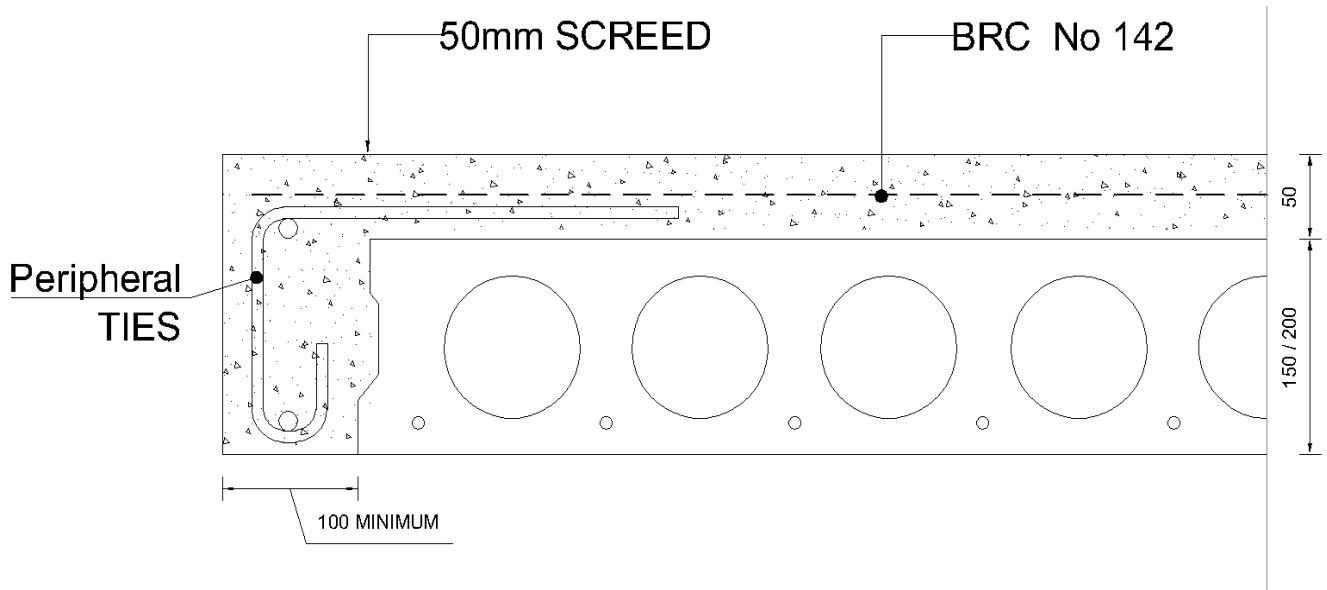


- 1200mm wide and 200mm thick Floor Slab of hollow core
- Reinforced with tensile steel cables
- 25MPa minimum concrete strength at de-tensioning
- Service load of 5.0 kN/sqm at a maximum span of 8m long
- Service load of 7.5 kN/sqm at a maximum span of 6m long
- One hour fire rating.

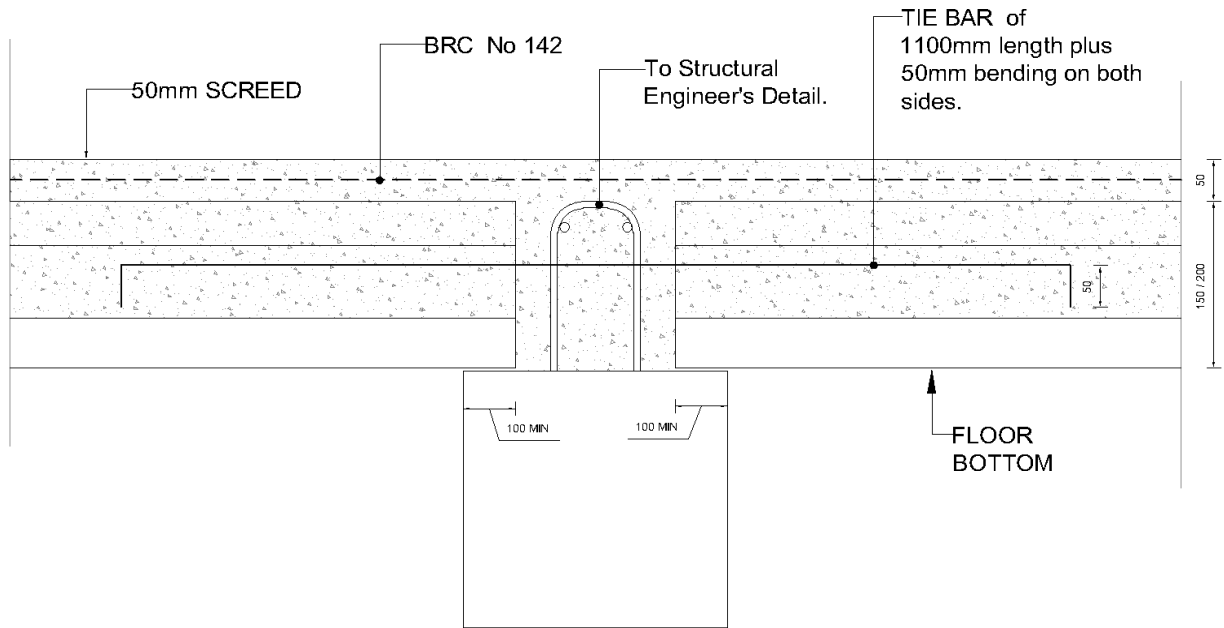


# CONNECTION DETAILS

## Floor Connection Details









ADDRESS

91/93 Sixth street,  
Industrial Area  
Kampala,  
Uganda  
[www.tilecentre.co.ug](http://www.tilecentre.co.ug)  
[info@tilecentre.co.ug](mailto:info@tilecentre.co.ug)



**TILE CENTRE LTD.**